

RIVER LEE



LEGEND:  
HARDWORKS:

- Site Application boundary**
  - Proposed dwellings Refer to Architects drawings**
  - Surfaces**
    - Paving Type 01: High quality permeable concrete paving flags
    - Paving Type 02: High quality permeable concrete block paving
    - Paving Type 03: High quality permeable concrete paving flags
    - Paving Type 04: Composite Decking
    - Paving Type 05: Granite sets
    - Paving Type 06: Open Space paths - self binding gravel
    - Paving Type 07: Play safety surface - bark mulch
    - Paving Type 08: Resin bonded
    - Paving Type 09: Cycle lane
    - Paving Type 10: Shared surface - High quality permeable concrete block paving
    - Paving Type 11: Carparking - High quality permeable concrete block paving
    - Paving Type 12: Asphalt roads to Engineer's specifications
    - Paving Type 13: Tarmac footpaths to Engineer's specifications
    - Paving Type 14: Wetpour to Creche
    - Paving Type 15: High quality permeable concrete paving flags
    - Paving Type 16: Reinforced grass
  - Kerbs and Edges**
    - Natural Stone Edging
    - Walling
  - Lighting**
    - LED Lighting Columns. Refer to Arup drawings.
    - Roughly Ready Crosswise Bench by Streetlife or similar and approved.
    - PC concrete planters with hardwood timber seating.
    - 206 no. Sheffield Cycle Stands
    - Telescopic Bollards
    - Static Bollards
    - Petra 5 188x117x72cm by Escofet or equal in all regards.
    - Petra L 195x150x80cm by Escofet or equal in all regards.
    - Catenary lighting
    - Open channel
  - Miscellaneous**
    - Typical Play equipment by Richter Spielgerate or equal in all regards.
    - Powder coated tree planter by Streetlife or similar and approved.
    - 1500x1500mm Tree Pit
    - 1.25m High Balustrade
    - Building Entrance
    - Stainless Steel handrail
    - 1.2m High Paladin Weldmesh fence
    - 1.8m High Paladin Weldmesh fence
    - 1.8m High Temporary fence
- Note: For all boundary treatments and retaining walls site wide refer to Architects Drawings
- FFL = 60.50+
- Existing Levels  
Proposed Levels  
Proposed Gradient

**Riparian Woodland**

Species	Height	Stock	Spec	Density
Alnus glutinosa	80-100cm	BR	1+2 Bushy	0.5/m2
Salix alba	80-100cm	BR	1+2 Bushy	0.5/m2
Salix viminalis	80-100cm	BR	1+2 Bushy	0.5/m2
Quercus robur	80-100cm	BR	1+2 Bushy	0.5/m2
Corylus avellana	80-100cm	BR	1+2 Bushy	0.5/m2
Crataegus monogyna	80-100cm	BR	1+2 Bushy	0.5/m2
Ilex aquifolium	125-150cm	RB	leader/lateral/5	0.5/m2

**Field Layer**

Species	Height	Stock	Spec	Density
Ranunculus repens	30-40cm	C2		4/m2
Rumex sanguineus	30-40cm	C2		4/m2
Filipendula ulmaria	30-40cm	C2		4/m2
Angelica sylvestris	30-40cm	C2		4/m2
Impatiens glandulifera	30-40cm	C2		4/m2
Galium palustre	30-40cm	C2		4/m2
Lythrum salicaria	30-40cm	C2		4/m2
Primula vulgaris	30-40cm	C2		4/m2
Hedera helix	30-40cm	C2		4/m2
Rubus fruticosus	30-40cm	C2		4/m2
Allium ursinum	30-40cm	C2		4/m2

**Grass seeding**

Open space lawn - Mix: 30% (Perennial Ryegrass) + 30% (Perennial Ryegrass) + 40% (Strong creeping red fescue) + Sowing rate: 35g/m2 (12.5Kg 20 bags/Ha @ 25/gm2) Cutting height: Between 20-50mm

**Meadow Area** Traditional Irish wildflower mixture

**Bulb Planting** Native Irish mixture

PLANNING

DC	17.03.22	P01
By	Date	Rev
Check		

Revision Details

Status: PLANNING

Refer to M&E engineers details for lighting specifications.

For all boundary treatments and retaining walls site wide refer to Architects Drawings

All paving and coping to meet all statutory anti-slip requirements >45 and loadings

All dimensions of paving are indicative at this stage and will be confirmed as part of the technical design.

All paving should be laid in accordance with BS 7533 Part 101.

Ecological Park - 5 no. Log Piles using native logs for hedgehogs & 5 no. Insect hotels & 6 no. bat boxes to be installed as per Dixon/Brannon Environmental Consultants recommendations.

Levels are indicative Refer to Engineers drawings for detailed information.

**Park Hood**  
Chartered Landscape Architects

Hawarden House, 163 Upper Newtownards Road, Belfast, BT4 3HZ  
T: +44 (0)28 9029 8020 E: info@parkhood.com parkhood.com

Client: Tiznow Property Company Limited (Comer Group Ireland)

Project: City Park Development at the Former Tedcastles Site, Centre Park Road, Cork City

Title: Landscape Masterplan

Scale@A0: 1-500 Date: March 2022

Dwg.no: 7248-L-2000

**Tree Planting**

Tree tags	Species	Girth	Height	Spec
Qp	Quercus palustris	18-20cm	4.0-5.0m	3xtr. (R/B)
Te	Tilia europaea	18-20cm	4.0-5.0m	3xtr. (R/B)
Pa	Prunus avium	16-18cm	4.0-5.0m	3xtr. (R/B)
Pc	Pyrus calleryana 'Chanticleer'	16-18cm	4.0-5.0m	3xtr. (R/B)
Bp	Betula pendula	16-18cm	4.0-5.0m	3xtr. (R/B)
Ag	Alnus glutinosa	16-18cm	4.0-5.0m	3xtr. (R/B)
Ap	Acer platanoides	16-18cm	4.0-5.0m	3xtr. (R/B)
Qr	Quercus robur	16-18cm	4.0-5.0m	3xtr. (R/B)
Ls	Liquidambar styraciflua	20-25cm	4.5-5.5m	4xtr. (R/B)

**Small and Multistem Trees**

Tree tags	Species	Height	Spec
Ag2	Amenlanchier 'grandiflora' Robin Hill	3.5-4m	3xtr. (R/B)
Bu	Betula utilis var. jacquemontii	3.5-4m	3xtr. (R/B)
Cm	Corylus mas 'dogwood'	3-4m	3xtr. (R/B)
Pp	Prunus padus 'bird cherry'	3-4m	3xtr. (R/B)

**Tree Planting - Wetland areas**

Tree tags	Species	Girth	Spec
Bp2	Betula pubescens	8-12cm	3xtr. (R/B)
Bp	Betula pendula	8-12cm	3xtr. (R/B)
Sc	Salix caprea	8-12cm	3xtr. (R/B)
Cc	Crataegus monogyna	8-12cm	3xtr. (R/B)

**Native Woodland Planting**

Species	Height	Stock	Spec	Density
Corylus avellana	80-100cm	BR	1+2 Bushy	0.5/m2
Pinus sylvestris	80-100cm	C.SL	leader/lateral/0.5/m2	
Viburnum opulus	80-100cm	BR	1+2 Bushy	0.5/m2
Eunoyms europaea	80-100cm	BR	1+2 Bushy	0.5/m2
Betula pendula	80-100cm	BR	1+2 Bushy	0.5/m2
Crataegus monogyna	80-100cm	BR	1+2 Bushy	0.5/m2
Prunus avium	80-100cm	BR	1+2 Bushy	0.5/m2
Ilex aquifolium	125-150cm	BR	leader/lateral/0.5/m2	
Sambucus nigra	80-100cm	BR	1+2 Bushy	0.5/m2

**Hedge planting**

Species	Stock	Height	Spec	Density
Ligustrum ovalifolium	RR/C	1m	Double staggered row	4/mtr

**Shrub Planting**

Species	Stock	Spec
Pyracantha 'Orange Glow'	C5	Branched
Cornus alba 'Sibirica'	C5	Branched
Filaeoglossus x ebbingei	C5	Branched
Sarcococca hookeriana	C5	Branched
Hebe rakienis	C5	Branched
Skimmia 'Kew Green'	C5	Branched
Verbena bonariensis	C2	Branched
Dianthus barbatus	C2	Branched

**Medium/Low Shrub Planting**

Species	Stock	Spec
Lavandula angustifolia 'Hidcote'	C2	Bushy
Potentilla fruticosa 'Goldfinger'	C2	Full pot
Skimmia japonica	C2	Full pot
Spiraea japonica 'Goldmound'	C2	Full pot
Hebe 'Green Globe'	C2	Full pot
Berberis darwinii 'Darwin's barberry'	C2	Full pot
Salix x sylvestris 'Mairacht'	C2	Full pot
Silpa tenuissima	C2	Full pot
Rudbeckia fulgida 'Early Bird Gold'	C2	Full pot
Carex divivka	C2	Full pot
Senecio 'Autumn Joy'	C2	Full pot
Allium hollandicum	C2	Full pot

**Rain Garden Planting Mix**

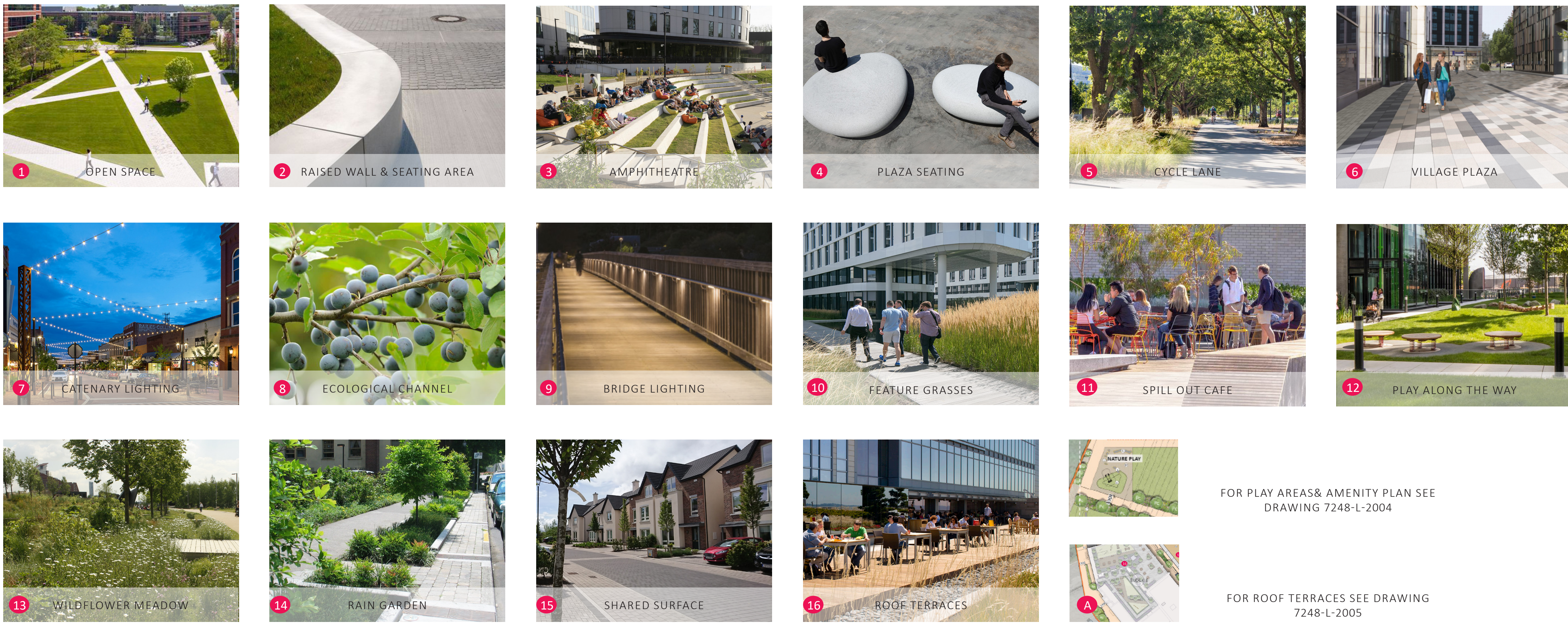
Species	Stock	Height	Spec	Density
Eunoyms alatus 'Compactus'	C5	90-120cm	Branched	2/m2
Osmunda regalis	C2	30-40cm		4/m2
Iris pseudoacodrus	C2	30-40cm		4/m2
Deschampsia cespitosa	C2	30-40cm		4/m2
Miscanthus s. 'Kleine Fontaine'	C2	30-40cm		4/m2
Valeriana officinalis	C2	30-40cm		4/m2
Achillea filipendulina 'Moonshine'	C2	30-40cm		4/m2
Sanguisorba officinalis	C2	30-40cm		4/m2
Aster novi-belgii	C2	30-40cm		4/m2
Angelica sylvestris 'Purpurea'	C2	30-40cm		2/m2
Geranium macrorrhizum 'Gerwat'	C2	30-40cm		6/m2
Primula japonica 'Millers' Crimson'	C2	20-30cm		6/m2
Hebeboris foetidus	C2	10-20cm		6/m2

**Shade-tolerant Mix**

Species	Stock	Height	Spec	Density
Deschampsia cespitosa	P9	20-30cm		6/m2
Ajuga reptans	C2	30-40cm		4/m2
Aquilegia vulgaris	C2	20-30cm		5/m2
Anemone hephepensis	C2	30-40cm		4/m2
Actaea simplex 'Atropurpurea'	C2	30-40cm		2/m2
Geranium macrorrhizum 'Gerwat'	P9	20-30cm		6/m2
Bergenia 'Bressingham Ruby'	P9	20-30cm		6/m2
Alchemilla mollis	C2	30-40cm		4/m2
Hebeboris 'Harrington double red'	P9	20-30cm		6/m2
Hebeboris foetidus	P9	20-30cm		6/m2
Heuchera micrantha 'Palace Purple'	C2	30-40cm		36/m2
Hypericum calycinum	C2	30-40cm		36/m2
Galanthus nivalis	Bulb			36/m2
Hedera helix	C2	60-80cm	Bushy	2/m2

**Swale Planting**

Species	Stock	Height	Spec	Density
Miscanthus sinensis 'Kleine Fontaine'	C2	30-40cm		4/m2



FOR PLAY AREAS & AMENITY PLAN SEE DRAWING 7248-L-2004

FOR ROOF TERRACES SEE DRAWING 7248-L-2005

